

Midnight Haunt

ANDOVER FABRICS

a
100
years



Scary Moon Banner and Pillow
designed by: **Janet Houts**

Banner Size: **30" x 64"**

Pillow Size: **24" x 24"**

Skill Level: **Intermediate**

andoverfabrics.com

andover • makower.uk

Free Pattern Download Available

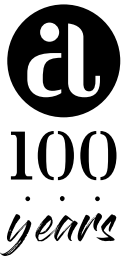
1384 Broadway New York, NY 10018
Tel. (800) 223-5678 • andoverfabrics.com

10/15/20

Scary Moon Quilt Banner & Pillow

Introducing Andover Fabrics new collection: **MIDNIGHT HAUNT** by Andover Fabrics

Quilt Banner and Pillow designed by Janet Houts



Quilt Banner finishes 30" x 64"

Pillow finishes 24" x 24"

Bats have long been associated with Halloween, perhaps because of those old black and white movies featuring frightening ghouls and goblins. This is just the right size to hang on your front door or to decorate your table during the holiday. Easy piecing makes it a sure winner.

Cutting Directions

Note: Read assembly directions before cutting patches. All measurements are cut sizes and include 1/4" seam allowances. A fat 1/4 is an 18" x 20"-22" cut. Sashes are cut the exact lengths required plus 1/4" seam allowances. WOF designates the width of fabric from selvage to selvage (approximately 42" wide).

[Cutting for pillow is in brackets]

Fabric A Cut (2) borders 7 1/2" x 30 1/2", cut crosswise

Fabric B Cut (12) squares 5" (4 7/8") for HST
(Read Step 2)
Cut (4) small bats [Cut 3 bats: 1 of each size]

Fabric C Fussy-cut rectangles 4 1/2" x 8 1/2", centering skeleton motif

Fabric D Cut (4) moons 7 1/2" diameter
[Cut 1 moon 10 1/2" diameter]

Fabric E Cut (6) squares 5" (4 7/8") for HST (Read Step 2)
Cut (8) squares 4 1/2" [Cut 2 squares 4 1/2"]

Fabric F Cut (6) squares 5" (4 7/8") for HST (Read Step 2)
Cut (8) squares 4 1/2" [Cut 2 squares 4 1/2"]

Fabric G Cut (48) squares 2"

Fabric H Cut (2) squares 12 1/2" [Cut 1 square 24 1/2"]

Fabric I Cut (5) strips 1 1/2" x WOF, pieced to make the following:
(2) sashes 1 1/2" x 48 1/2"
(2) sashes 1 1/2" x 30 1/2"

Fabric J Cut (2) squares 12 1/2"

Binding Cut (5) strips 2 1/2" x WOF for binding

Backing Cut (1) panel 38" x 72", pieced to fit quilt top with overlap on all sides
[Cut 1 square 24 1/2"]

Fabric Requirements

[Additional yardage for pillow is in brackets]

		Yardage	Fabric
Fabric A	border	1/2 yard	9780 K
Fabric B	HST, bats	1/2 yard [fat 1/4 yard]	9781 K
Fabric C	border	1 1/2 yards	9781 KL
Fabric D	moons	fat 1/4 yard [fat 1/4 yard]	9781 O
Fabric E	HST	3/8 yard	9784 C
Fabric F	HST	3/8 yard	9784 O
Fabric G	border	fat 1/4 yard	9785 KO
Fabric H	background	3/8 yard [3/4 yard]	9785 OL
Fabric I	sashes	1/4 yard	9786 O
Fabric J	background	3/8 yard	*9785 C
Binding		3/8 yard	9784 K
Backing		2 1/4 yards	*9785 C

Needed for appliqué: fusible web

Needed for pillow: 24" pillow form or stuffing

Making the Quilt Banner

1. To add the corners to the Fabric H and J 12 1/2" squares, draw a diagonal line on the wrong side of the Fabric E and F 4 1/2" squares. Referring to Diagram 1, place a marked square on the Fabric H square, right sides together, aligning raw edges at the corner. Stitch on the drawn line; trim away and discard excess fabric. Press open. Note the placement of the fabrics in the corners (Diagram 1). Repeat stitching on the remaining corners. Make 4 background blocks.

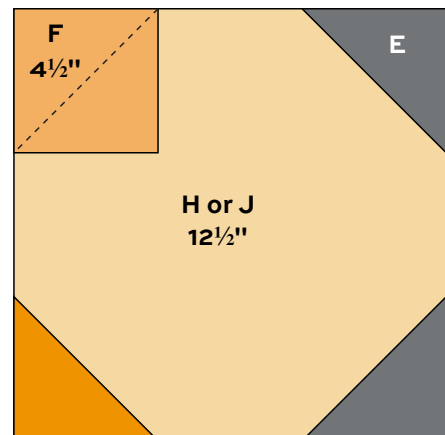
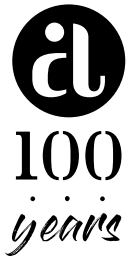


Diagram 1 – Make 2 with H and 2 with J

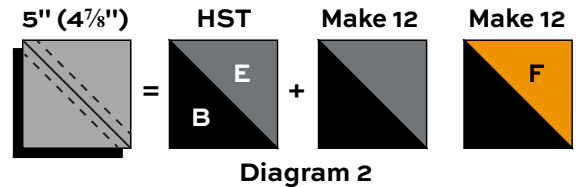
Scary Moon Quilt Banner & Pillow



2. These directions are for fusible appliqué. Trace the bat and moon motifs onto the paper side of paper-backed fusible web. Following manufacturer's instructions, fuse traced patterns to the wrong side of the appropriate fabrics. Cut out parts on the drawn lines. Position and fuse the patches in the center of each background square, referring to the quilt photograph for placement. Finish the edges with a decorative machine stitch using contrasting thread, or use an invisible thread with a blind appliqué machine stitch.

3. Arrange the 4 blocks in a vertical row, alternating backgrounds as shown. Join the blocks.

4. The quilt uses half-square triangles (HST) that finish 4" square. Use your favorite method to make HST, or follow these directions. Cut squares 5" for HST that will be trimmed after stitching. If you prefer not to trim, cut squares 4 7/8". Draw a diagonal line on the wrong side of each Fabric E 5" (4 7/8") square (Diagram 3). Place a marked square on a Fabric B square, right sides together. Sew 1/4" seam on each side of the marked line; cut apart on the marked line. Press open to make pieced HST. Trim the HST to 4 1/2" square as needed. Make 12 HST like this. Repeat these steps to make 12 HST with Fabric F and B squares.



5. Referring to the Quilt Diagram, arrange the HST along sides of the quilt as shown, paying careful attention to the orientation of the seams and fabrics. Looking through a camera or the wrong end of binoculars may help you find mistakes. Once you are satisfied with the arrangement, join 12 HST to make each side border. Sew borders to opposite sides of the quilt.

Border Unit – Make 12



6. The outer pieced border units are made with a stitch-and-flip technique. Draw a diagonal line on the wrong side of each Fabric G square. Referring to Diagram 4, place a marked square on a Fabric C rectangle, right sides together, aligning raw edges at the corner. Stitch on the drawn line; trim away and discard excess fabric. Press open. Repeat on the remaining corners. Make 12 border units. Join the units in 2 rows of 6 to make the outer side borders. Sew long Fabric I sashes to one side of each border as shown. Sew to the sides of the quilt.

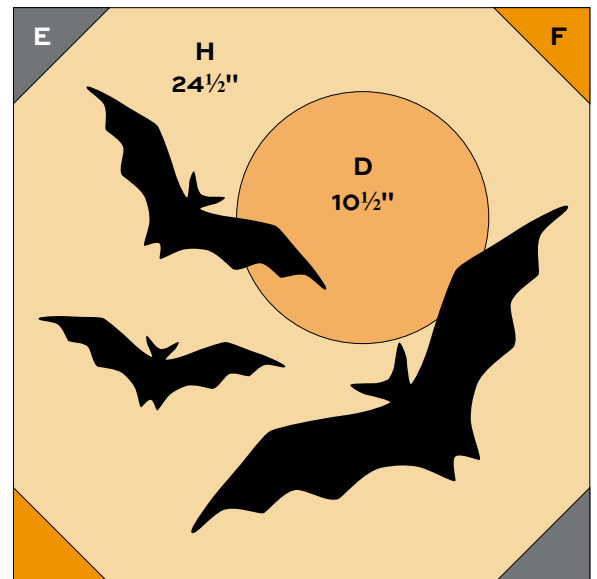
7. Sew a short Fabric I sash to each Fabric A border. Sew borders to the top and bottom.

Finishing the Quilt Banner

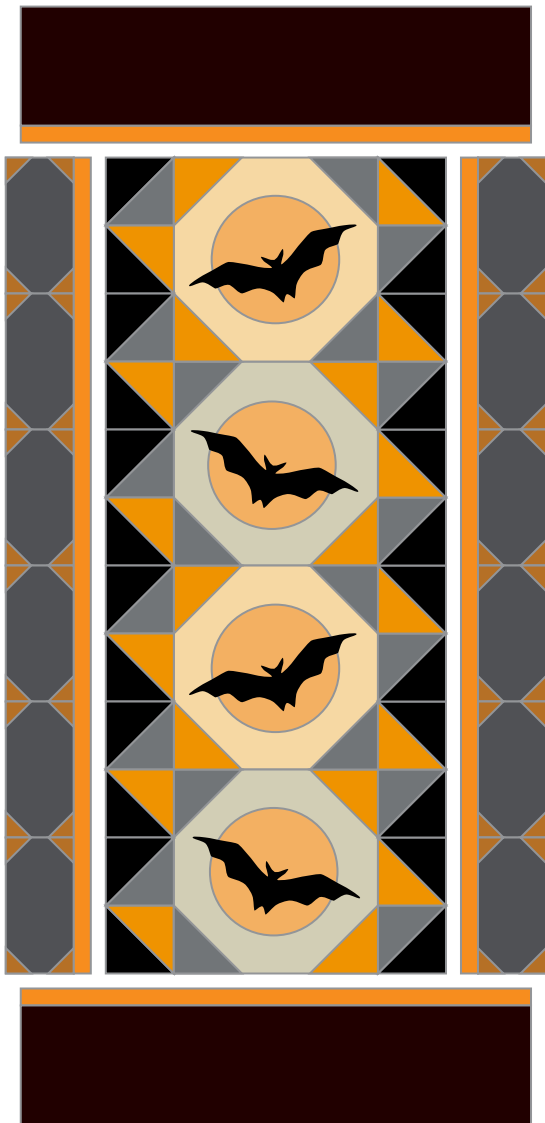
8. Layer the quilt with batting and backing and baste. Quilt in the ditch around borders and block patches. Quilt around the appliqué motifs. Bind to finish the quilt.

Making the Pillow

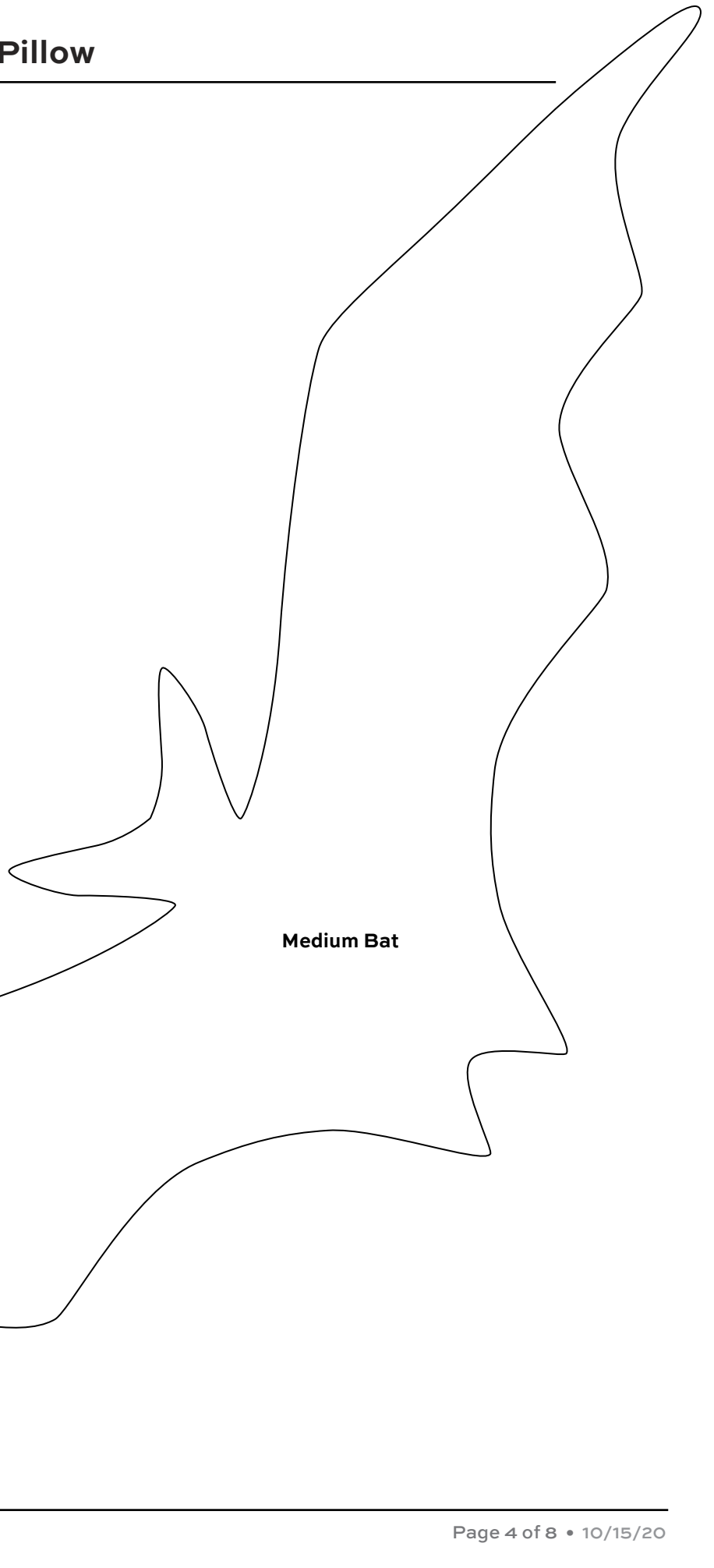
Follow Step 1 above to add corners to the background squares and to appliqué the moons and bats, noting placement of Fabric E and F corners. Position the pillow front on top of the backing, right sides together. Pin all around. Stitch in a 1/4" seam, leaving a generous opening along one side, not at the corner. Backstitch at the opening to secure. Trim the corners. Turn right side out and use a knitting needle or chopstick from the inside to push the seam so there are no puckers. Press the edge. Lightly stuff with polyfil or a 24" pillow form. Stitch the opening closed.



Scary Moon Quilt Banner & Pillow



Quilt Diagram



Medium Bat

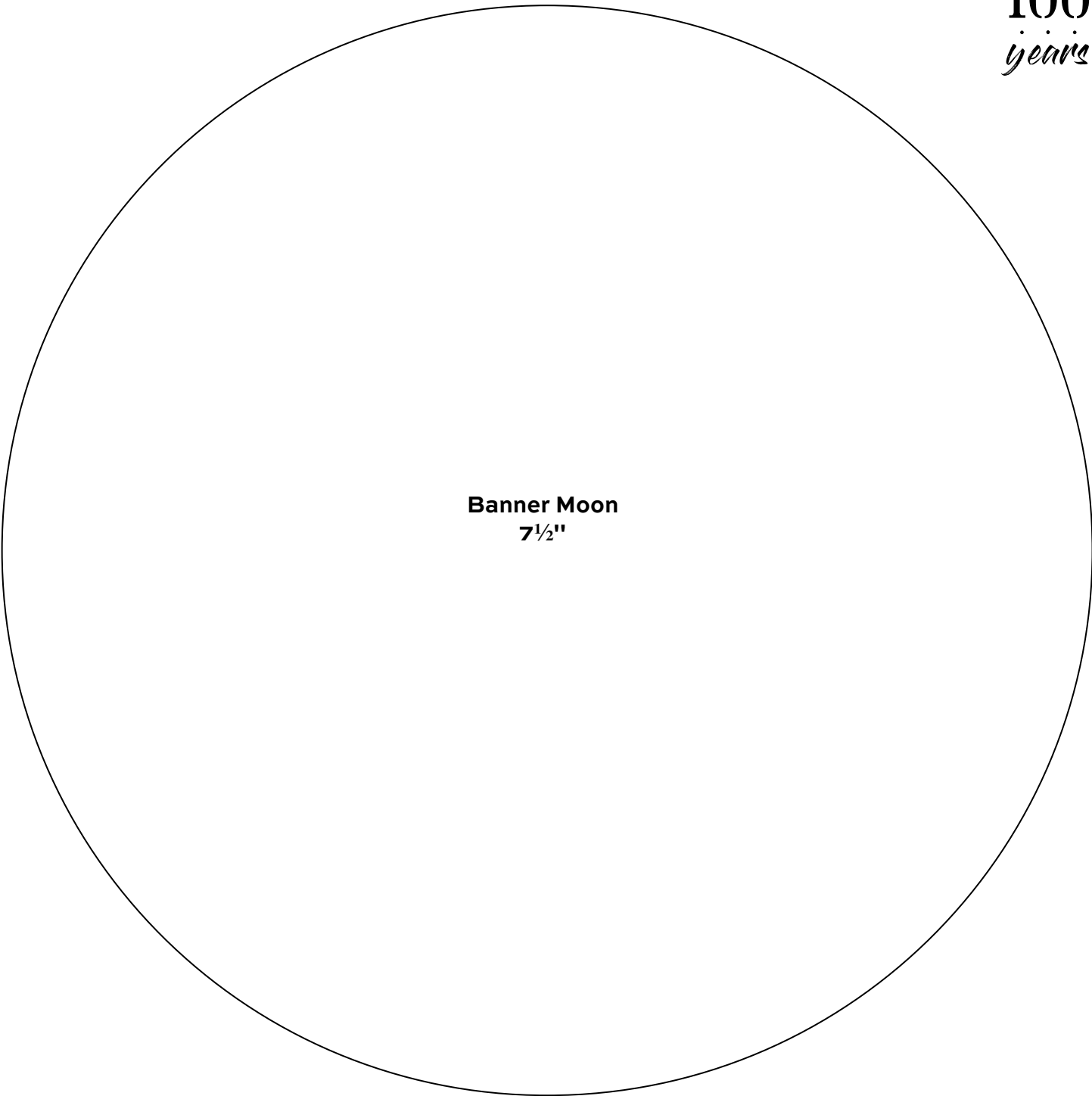
Place on fold

$\frac{1}{2}$ Large Bat

Small Bat

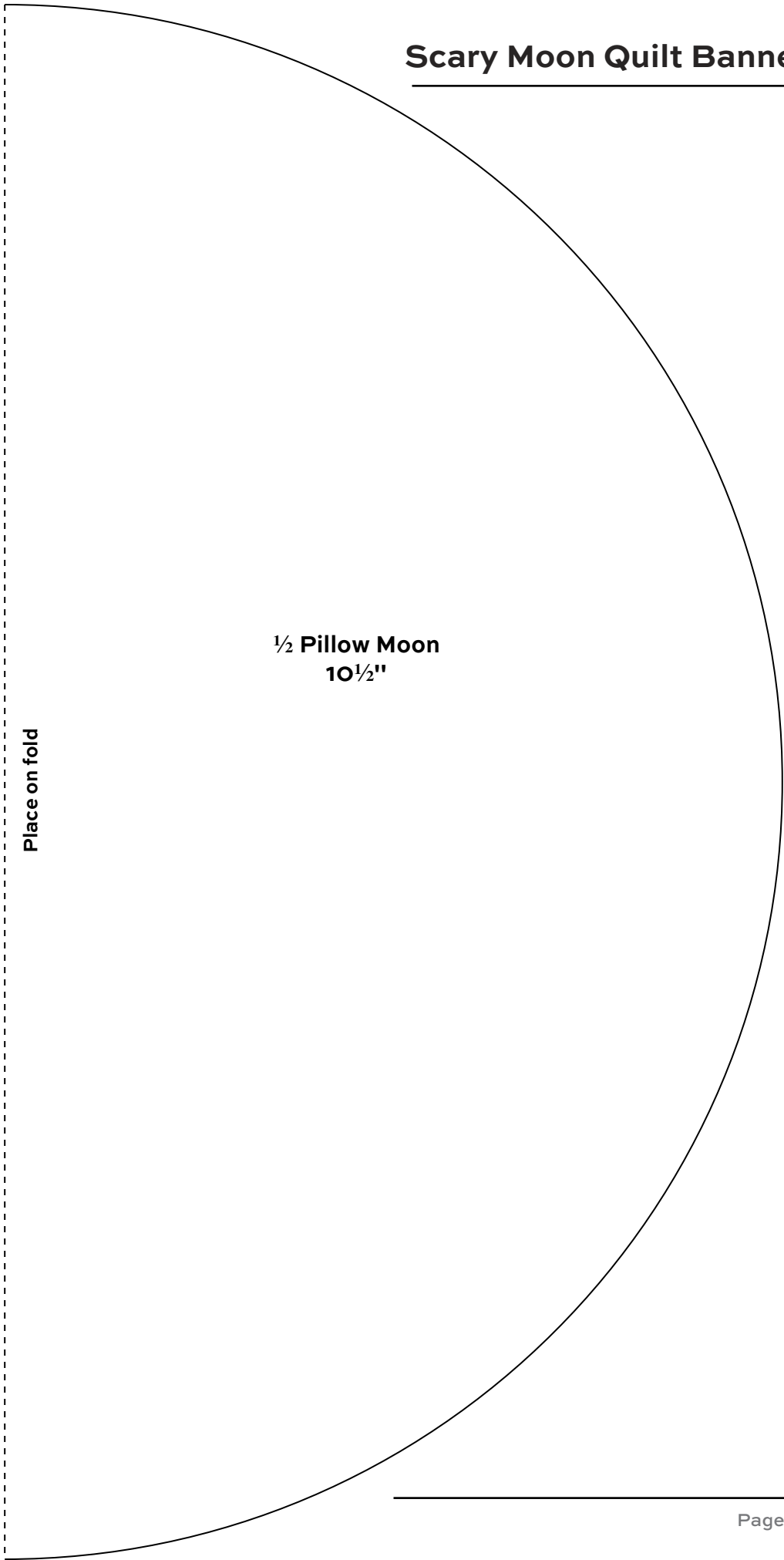


100
years



Banner Moon
7½"

Scary Moon Quilt Banner & Pillow



**1/2 Pillow Moon
10 1/2"**

Place on fold

Midnight Haunt ANDOVER FABRICS

a
100
years



9780 C



9780 K



9780 L



9781 K



9781 KL



9781 O



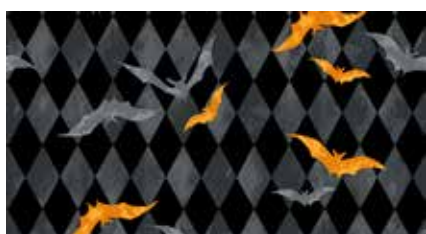
9782 K



9782 L



9782 O



9783 K



9783 L



9783 O



9784 C



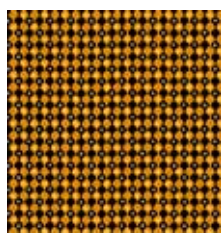
9784 K



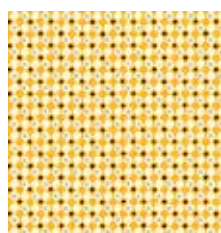
9784 O



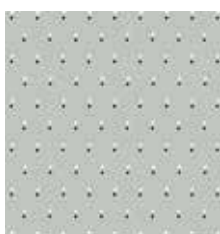
9785 C



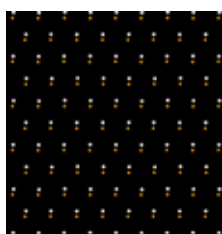
9785 KO



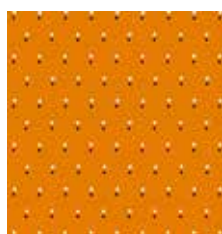
9785 OL



9786 C



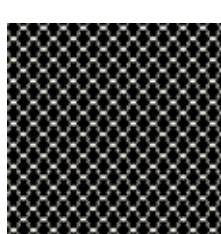
9786 K



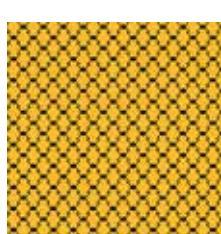
9786 O



9787 C



9787 KL



9787 O

Fabrics used in quilt patterns are shown in black. Fabrics shown are 25% of actual size.

andover : makower uk

Free Pattern Download Available

1384 Broadway New York, NY 10018
Tel. (800) 223-5678 • andoverfabrics.com